

Federal Railroad Administration: Railroad Security Program



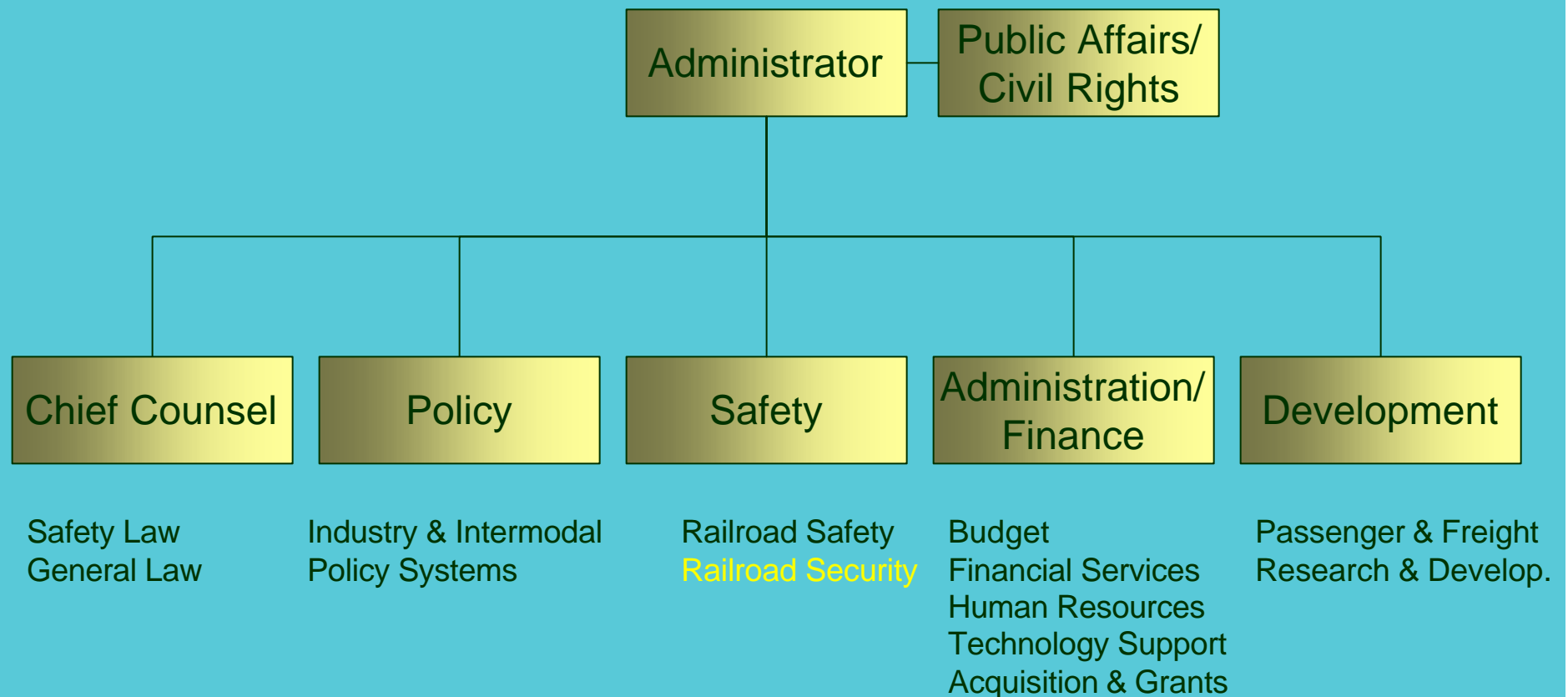
Presented by

William J. Fagan

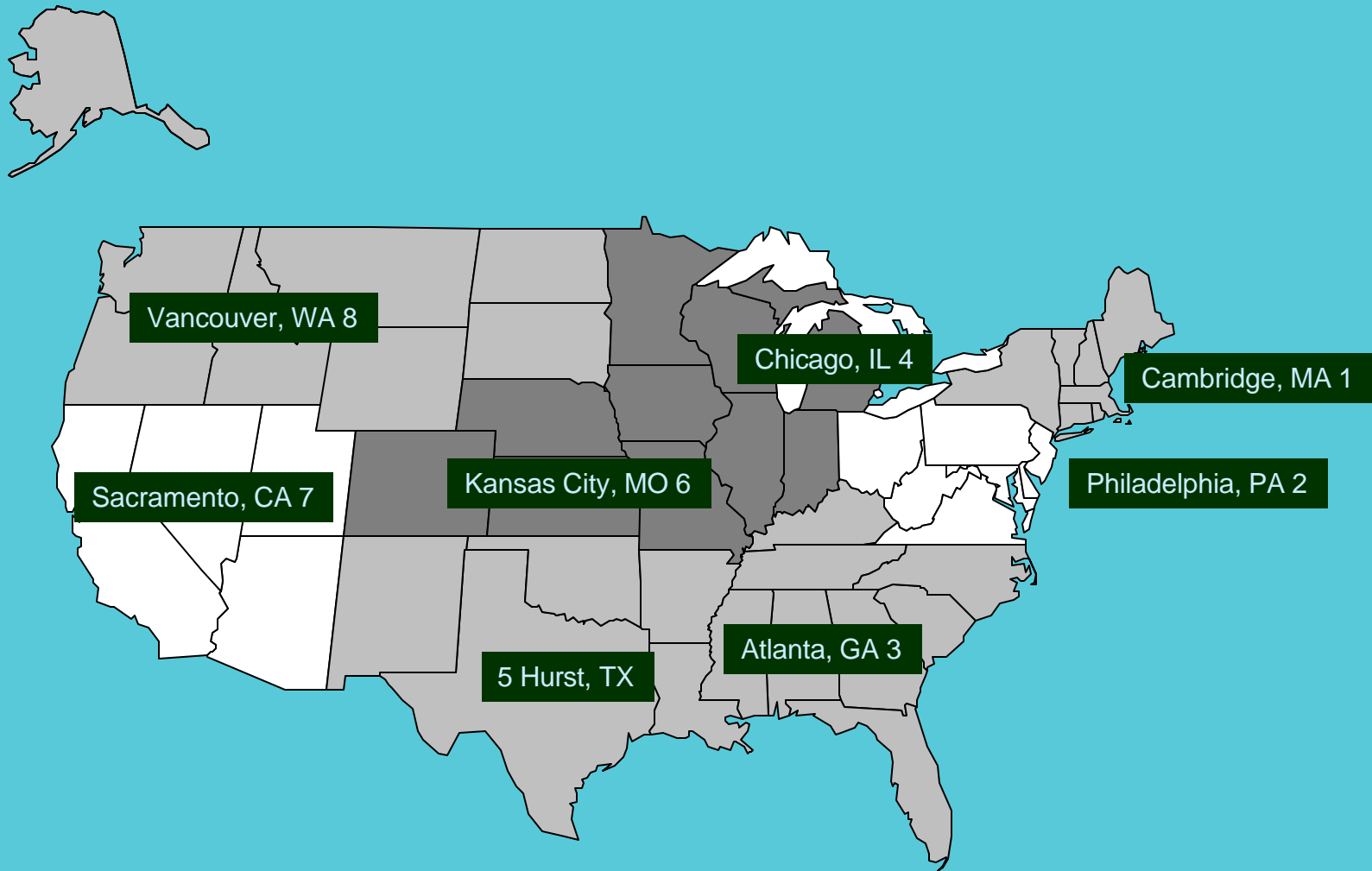
**Federal Railroad
Administration**

Federal Railroad Administration

General Organization



Federal Railroad Administration Regions



Industry Overview

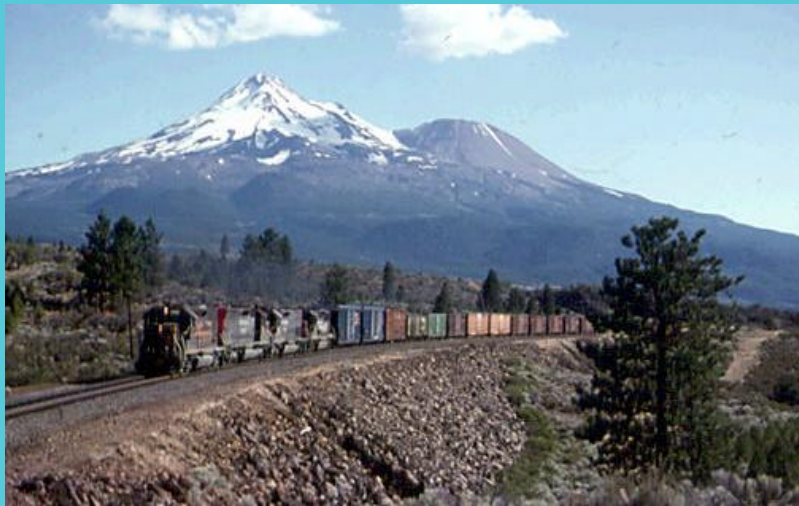
Railroad System



- 675 railroads
- 220,000 miles of track
- 265,000 employees
- 1,300,000 railcars
- 20,000 locomotives
- 8,800 passenger coaches
- 35,000 shippers
- 30 building locations
- 1000's maintenance facilities

Federal Railroad Administration

Safety and Security Activities



- Regular inspections
 - Railroads
 - Shippers
 - Manufacturers
 - Emergency Plans
 - Maintenance organizations
- Accident investigations
- Incident investigations
- Complaint investigations

Hazardous Material Inspection Areas



- Registration
- Shipping papers
- Marking
- Labeling
- Placarding
- Emergency response
- Training
- Packaging authorizations
- Railroad operating requirements
- Packaging specifications & maintenance

Railroad Security

**Terrorism is a
threat to the
nation's
railroads**



Railroad Security

- The Department of Transportation (DOT) maintains a National Response Center (NRC) which is staffed on a 24 hour, 7 days a week basis for the reporting of accidents/incidents affecting all modes of transportation.
- In addition, the Department also has a Crisis Management Center (CMC), for handling natural disasters - such as floods and earth quakes.

Railroad Security

- The Federal Railroad Administration (FRA) maintains a railroad security communications network to alert the railroad industry of potential security threats and to immediately notify law enforcement about security related incidents that occur on our Nation's railroads.
- FRA receives information from all sources about potential security threats and disseminates this information to railroads, police and other relevant security officials.

Railroad Security

- **FRA's security mission includes the public safety of the freight and passenger railroad networks.**
- **Railroad security operational functions:**
 - **Uniformed Police**
 - **Special Agents**
 - **State of the art security systems**
 - **High speed redundant communications**

Railroad Security

- **Consequence Management**
 - Detailed planning based on real life scenarios
 - Drills and exercises down to the local government level
 - Industry and government partnerships to work out solutions prior to emergencies
 - Maximum feasible decentralized control and incident response

Security Measures

- **Railroad Security Communications Network** established several years ago to notify the industry of potential threats
- **Railroad Police Security** – commissioned policed officers under 49 CFR 207 with interstate jurisdiction
- **Passenger Train Emergency Preparedness** that require railroads to conduct detailed planning for emergency situations

Security Measures continued

- **Dispatching centers monitoring overall railroad situation covering:**
 - Track and roadbed
 - Bridges
 - Tunnels
 - Culverts
 - Interlockings
 - Electric traction systems

Federal Railroad Administration Operational Security

- **Physical assets**
- **Operational issues**
- **Information technology systems**
- **Hazardous materials**
- **Department of Defense liaison**
- **Passenger handling**
- **Security plans for special events**

Federal Railroad Administration

Operational Security continued

- **Security plans for special public events**
 - Rerouting of trains that would pass by these events and/or impede vehicular traffic flow
 - Increased presence of FRA inspectors in areas of special events
 - Detailed planning with local police and emergency responders

Amtrak

- **Amtrak and local police conducting terminal surveillance operations**
- **Enhanced security at entrances/exits to facilities and vehicles**
- **Baggage check & Ticket purchase requires ID**
- **Mgt & Labor crews to report suspicious activities**
- **Increased surveillance of tunnel portals and bridges**
- **Increased joint operations and training with local police agencies.**

Commuter Railroads

- **Implemented emergency response plans to evacuate people from major urban areas**
- **Mobilized police force in same manner as Amtrak**
- **Increased surveillance at critical areas such as entrances/exits as well as bridges and tunnel portals**

Freight Railroads

- **Railroad police**
- **Security sweeps at strategic rail locations**
- **Detailed security plans in place**
- **Robust use of technology**
- **Experienced with natural disasters**

Railroad Security

What's being done at DOT

- **HAZMAT Security Regulations**
- **Continued liaison with Industry and Labor**
- **Intelligence sharing & Security Alerts**
- **Enhancement to tank cars**
- **Railroad Police Security Training**

DOT Security Mission

- **Reduce vulnerabilities**
- **Improve response to security issues**
- **Keep the Nation's transportation running in a safe and secure manner**

Questions??



Resources

Web Sites:

FRA

<http://www.fra.dot.gov>

RSPA Hazardous Materials

<http://hazmat.dot.gov/hazhome.htm>

Government Printing Office

<http://www.gpo.gov>

