

# **Electronic Recordkeeping of FRA Tests and Inspections SACP Initiative**

**General Project Overview  
Joe Lydick (FRA), Floyd Mason (BRS)  
& Mike Choat (CSXT)**



# Objectives

## Electronic FRA Test and Inspection System will:

- **Enable:**
  - Concise planning
  - Accurate and compliant recordkeeping
  - Timely employee feedback
- **Ensure:**
  - Consistent workflow processes
  - Consistent data collection and integrity

# History

- **SACP identified missing FRA tests & inspections**
- **SACP studied availability of test time for signal maintainers**
  - Reviewed methods to improve maintenance efficiency
  - Conducted field time studies
  - Compared available test time to assigned equipment
- **BRS, CSX, & FRA jointly developed “Electronic FRA Record Keeping”**
  - Record of required tests
  - Record of maintenance exceptions
  - Work scheduling tool
  - Elimination of hard copy records

# Four Key Components

- **Security**
- **Data Center**
- **Personal Mobile Tool**
- **Communication Infrastructure**



# What makes each unit secure?

- Secure Digital™ technology
- Serialized by the SD card manufacturer
- Assigned to an individual (like a credit card or a key)



# **Core Component**

## **Data center centric, Internet-based system**

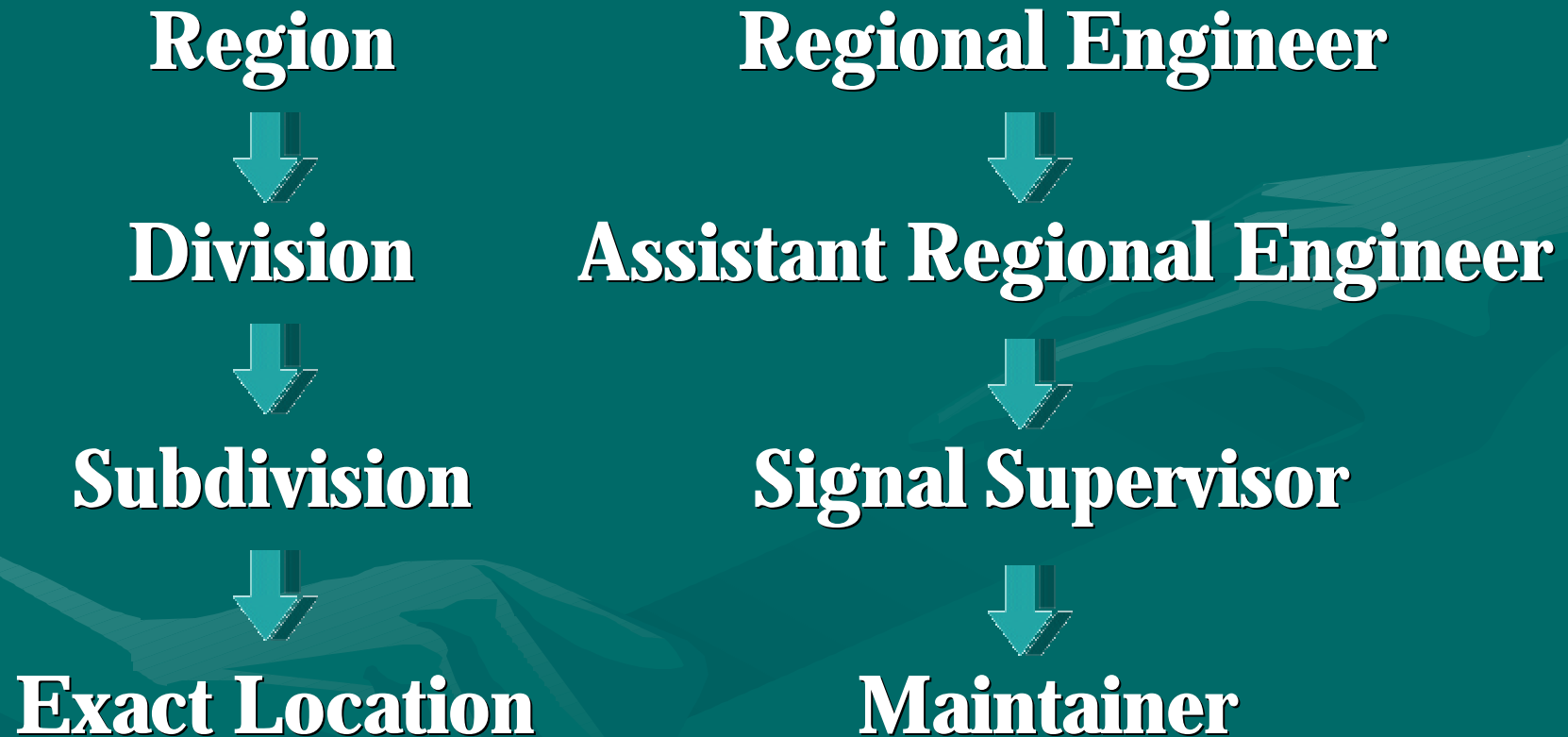
- **Data storage**
- **Data correlation**
- **Scheduling**
- **Record viewing, reporting, and printing**
- **Automated notifications**

# RailDOCS

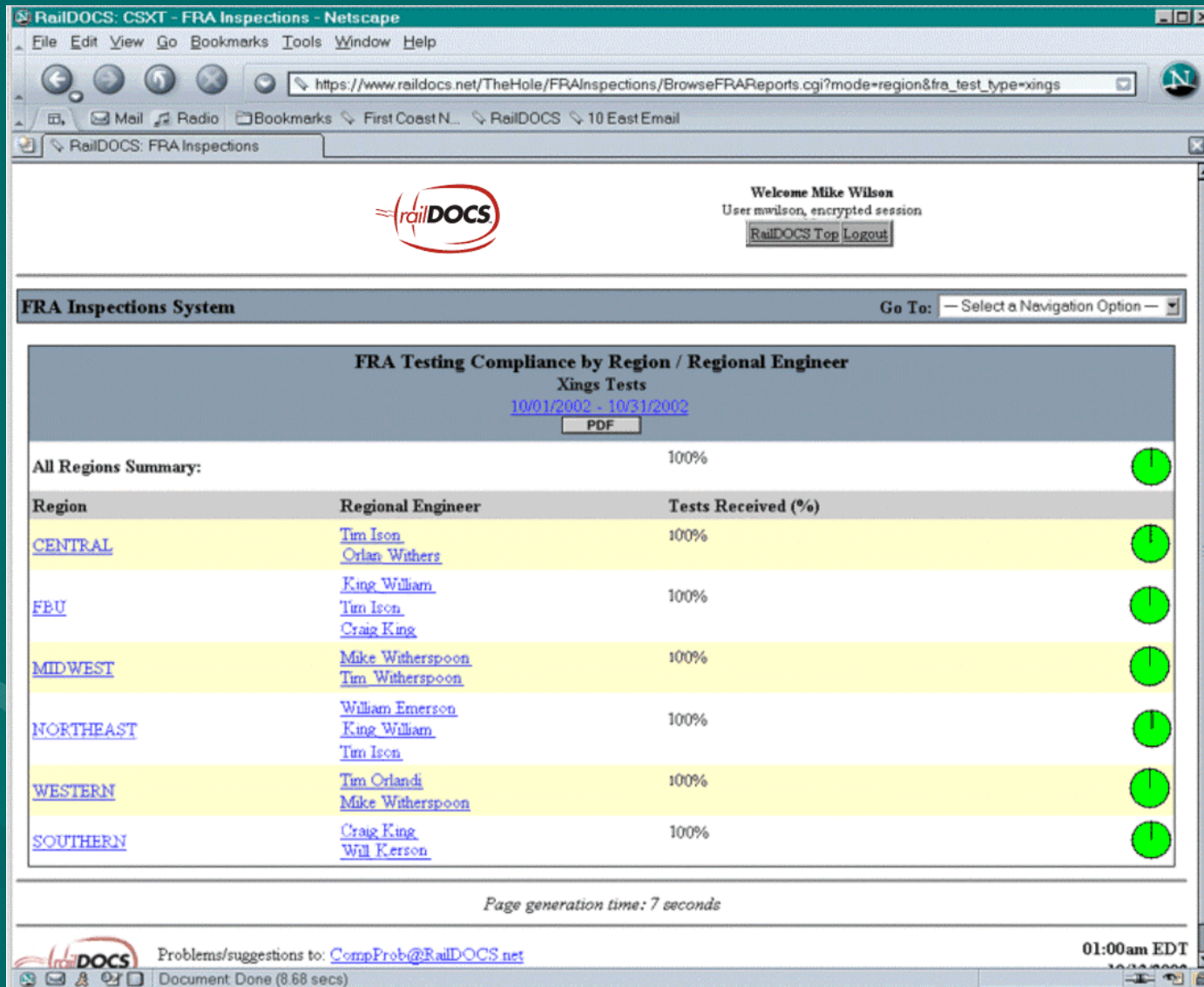
## CSXT'S Data Storage



# Management Reporting Structure



# Management Reporting



# Test Document

NetScape  
File Edit View Go Bookmarks Tools Window Help  
http://www.ralldocs.net/TheHole/FRA/Inspections/Reports/cgi/DCw/Inspection\_00000000\_20021023\_090.pdf?test\_type=ring  
http://www.ralldocs.net/id=544E?Type=col20

## CSXT Test no. 31 Highway Grade Crossing Tests & Inspections

Division: JACKSONVILLE	Force No. 7AE3
Subdivision: FERNANDINA	
Location / Highway (name): BARNWELL RD.	
Milepost (with prefix): SMA 40.79 - 40.79	DOT: 620806N
Employee's Name: Richard Hickox (rhickox)	Test Date: 10/23/2002
Equipment Present: Flashers/Bell/Gates	
Control Equipment: Motion Detector	

Conditions Master Key  
 C = Test completed, condition left in compliance  
 A = Adjustments made, test completed and condition left in compliance (identify items on exception form)  
 R = Repair/Replacements made, test completed and condition left in compliance (identify items on exception form)  
 N = Not Applicable

	Condition	Grounds (FRA 234.249) Monthly	
		Buss Nomenclature	Condition
Stand By Power (FRA 234.251) Monthly	<input checked="" type="checkbox"/> C		
Flashing Light Units (FRA 234.253) Monthly	<input checked="" type="checkbox"/> C	XB	C
Gate Arms & Mechanism (FRA 234.255) Monthly	<input checked="" type="checkbox"/> C	OB10	C
Warning System Operation (FRA 234.257) Monthly ADJUSTED BELL EAST SIDE	<input checked="" type="checkbox"/> R	GB	C
Traffic Pre-Emption (FRA 234.261) Monthly	<input checked="" type="checkbox"/> N		
Cut-Out Circuits (FRA 234.269) Quarterly	<input checked="" type="checkbox"/> N		
Insulated Jts. & Trk. Connections (FRA 234.271) Quarterly	<input checked="" type="checkbox"/> C		

Document: Done (1.796 sec)

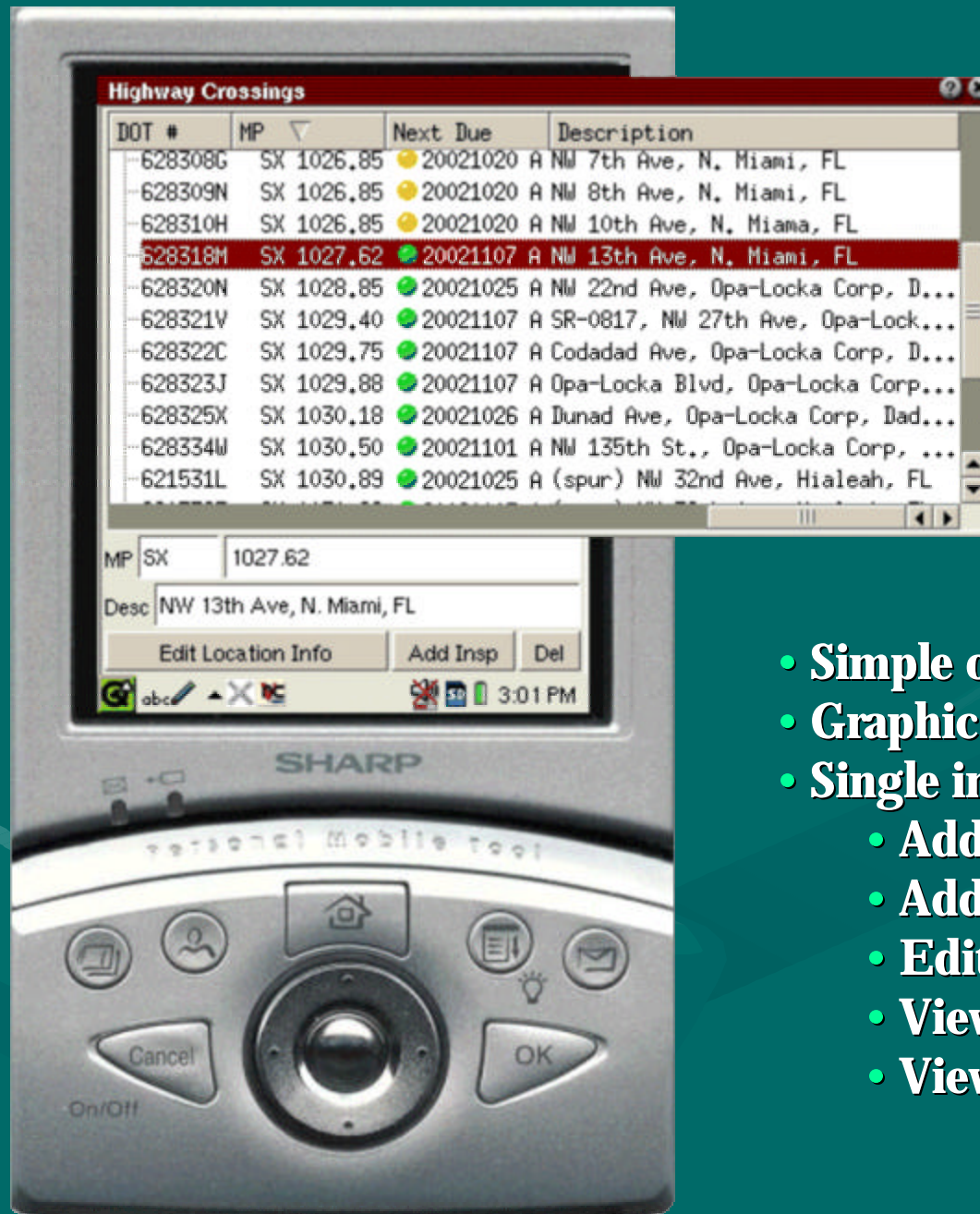


# **Field Component**

## **PMT – Personal Mobile Tool**

- **Drives the workflow process**
- **Provides the highest level of accuracy and integrity to test and inspection data**
- **Provides users immediate feedback regarding incorrect information**
- **Maintains visibility of required FRA Tests and Inspections**

# Intuitive Interface



- Simple one-key data sorting
- Graphic and text-based information
- Single interface enables user to:
  - Add new locations
  - Add new tests
  - Edit location information
  - View tests completed
  - View tests that need to be done



# Typical Form

- Selection boxes
- Drop down lists
- Minimum input required
- Dependencies
- Error checking
- Immediate user feedback



**360 Day FRA Xing Inspection**

DOT # 6283 18M

Desc NW 13th Ave, N. Miami, FL

Equip. Type

Control Type

Insp Date Oct 12 2002

Standby Pwr FRA 234.251

Light Units FRA 234.253

Gates FRA 234.255

Operation FRA 234.257

Preemption FRA 234.261

Grounds

Bus Name	Condition Left	Comments

Bus Name

Condition Left FRA 234.249

Add Remove

Cutout Circuits FRA 234.269

Ins Jts/Trk Conn FRA 234.271

Lamp Voltages FRA 234.253

Cancel OK

On/Off

Light Alignment FRA 234.253

Flash Rate

Flasher	FPM	Condition Left	Commen

Flasher ID

Flashes per Minute 35

Condition Left FRA 234.253

Add Remove

Hold Clear Device FRA 234.255

Warning Time

FRA 234.259

Method 20 sec

Timing Relay and Devices

Timer	Condition Left	Dgn	Meas

Device Name

Condition Left FRA 234.265

Design/Plan Time 0 min 0 sec

Measured Time 0 min 0 sec

Add Remove

☐ Send a maintenance request

Send this Inspection to RailDOCS?

☐ Hold for Completion

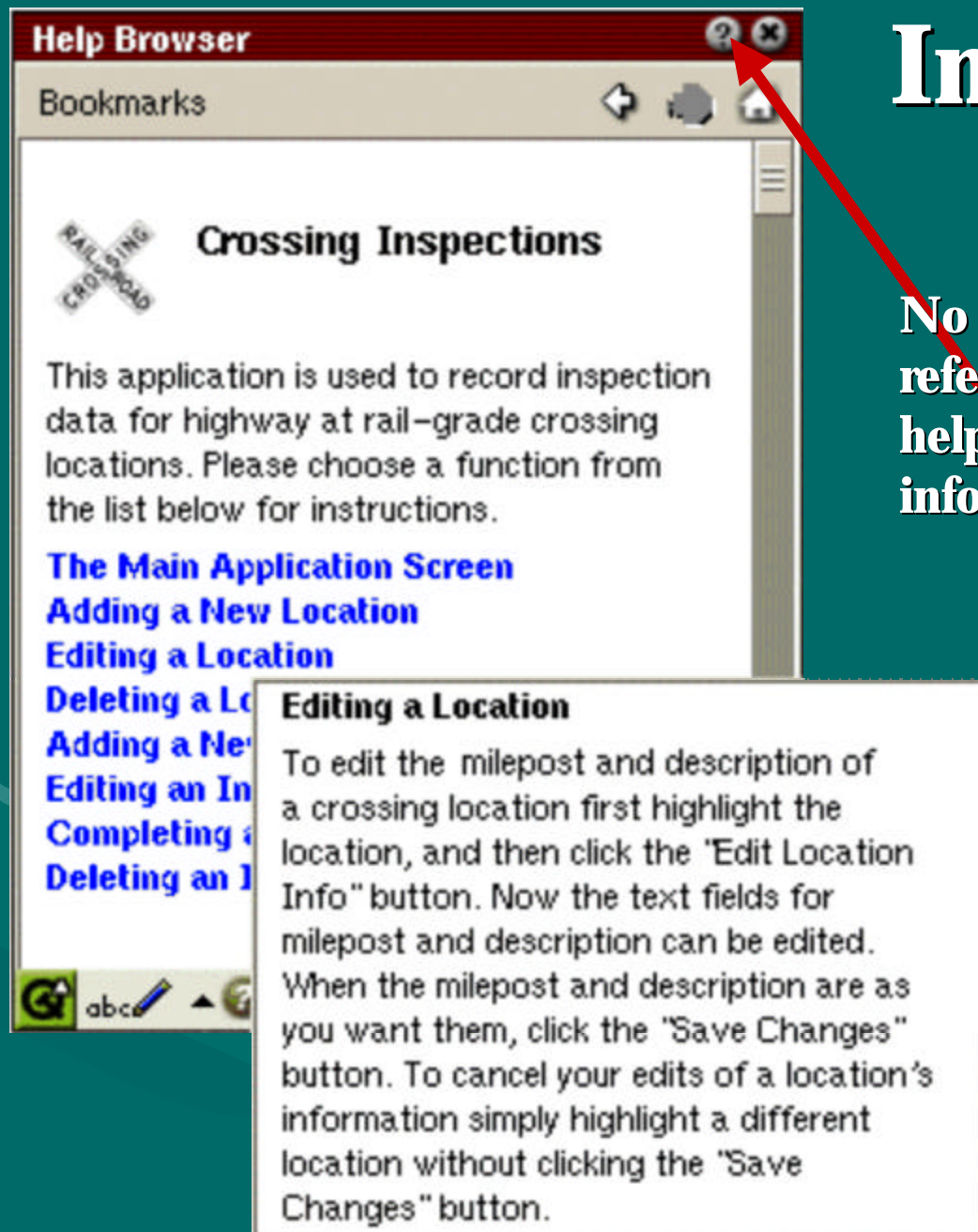
☐ Ready to Send

Save Cancel

12:13 PM

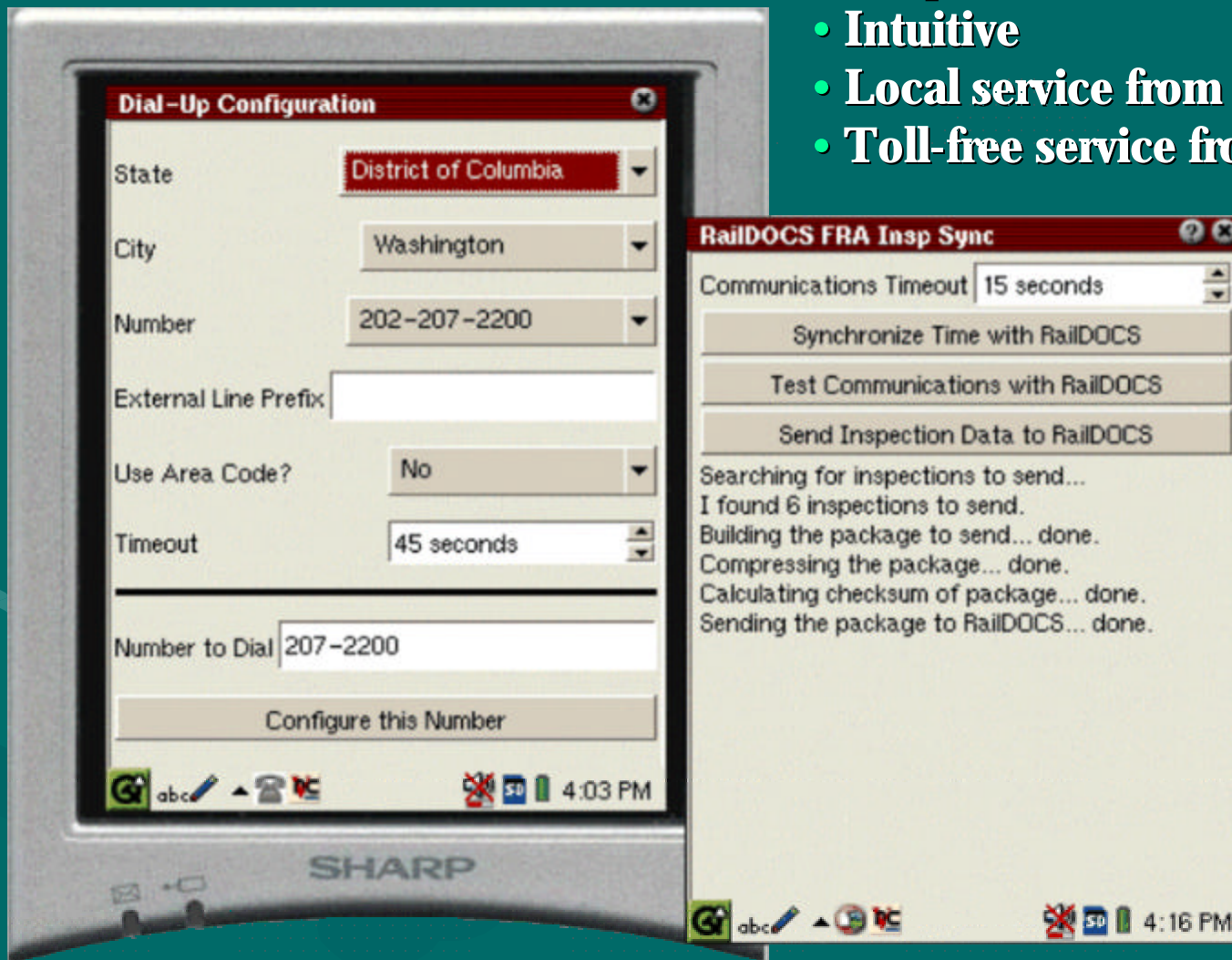
# Interactive Help System

No need to carry around additional reference material. Simple “linked” help system enables the user to find information quickly and easily.



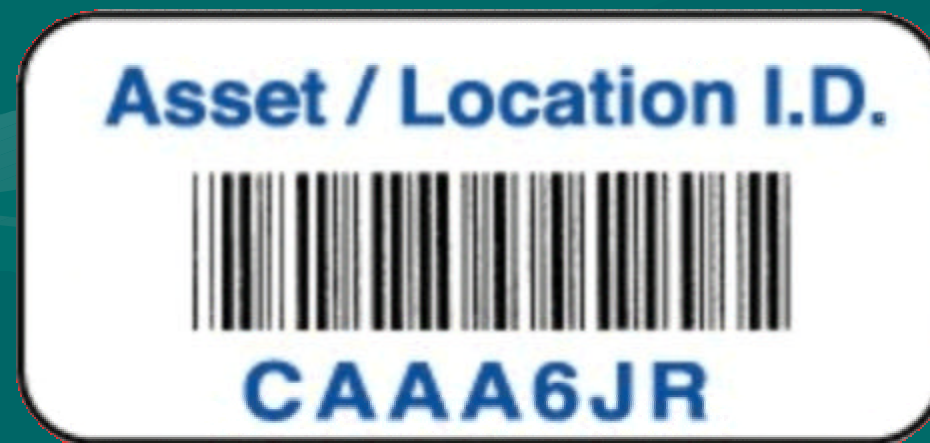
# Communication Interface

- Simple
- Intuitive
- Local service from thousands of cities
- Toll-free service from any US location



# Inspectable Asset ID

- Uses the DOT Number formula as the model
  - 6 characters plus checksum letter
- Plan to deploy this on all inspectable assets
  - Ensures discreet numbers for all assets
  - Railroad independent





# Pilot Project Status

- **Cross functional team met in Jacksonville, Florida April 16<sup>th</sup>**
  - **Floyd Mason & Gus Demott (BRS)**
  - **Mike Choat & Craig King (CSXT)**
  - **Bill Goodman, Jim Bush, Michael Woods, Bob Scieszinski & Mark Jones (FRA)**

# Working issues

- **FRA waiver condition of requirement to download tests within 24 hours**
  - CSXT to ask for reconsideration to allow for next business day download
- **Continuing work to finalize operations & training manual**
  - Complete within 30 days
- **Continue to ensure that security concerns, if any arise, are promptly addressed**
- **Petition the FRA for written interpretation of what time frame constitutes monthly, quarterly and annual tests**
- **Provide ability to make interim tests with no impact to work schedule**
- **Add signal construction foremen to pilot program** <sup>18</sup>

# Pilot Project Status Continued

- **Southern Region (excluding FBU)**
  - **275 Units Deployed**
  - **Approximately 50,000 Test Forms Collected**
  - **380,504 Completed Tests Collected**
- **Zero Software Failures**
- **10 Hardware Failures**
- **No Security Issues**
- **Peer Training Completed for All 275 Employees**

# Pilot Project Status Continued

- **Tests and Inspections Currently Supported**
  - Crossing Monthly, Quarterly, and Annual
  - Grounds
  - Timing
  - Switches
- **Tests and Inspections Under Development**
  - Relays
  - Locking
  - Electric Lock
  - Searchlight
  - Cable



# Questions

