

# FRA's Crossing Safety and Trespass Prevention Program

---

RSAC Presentation  
Washington, DC  
September 19, 2002

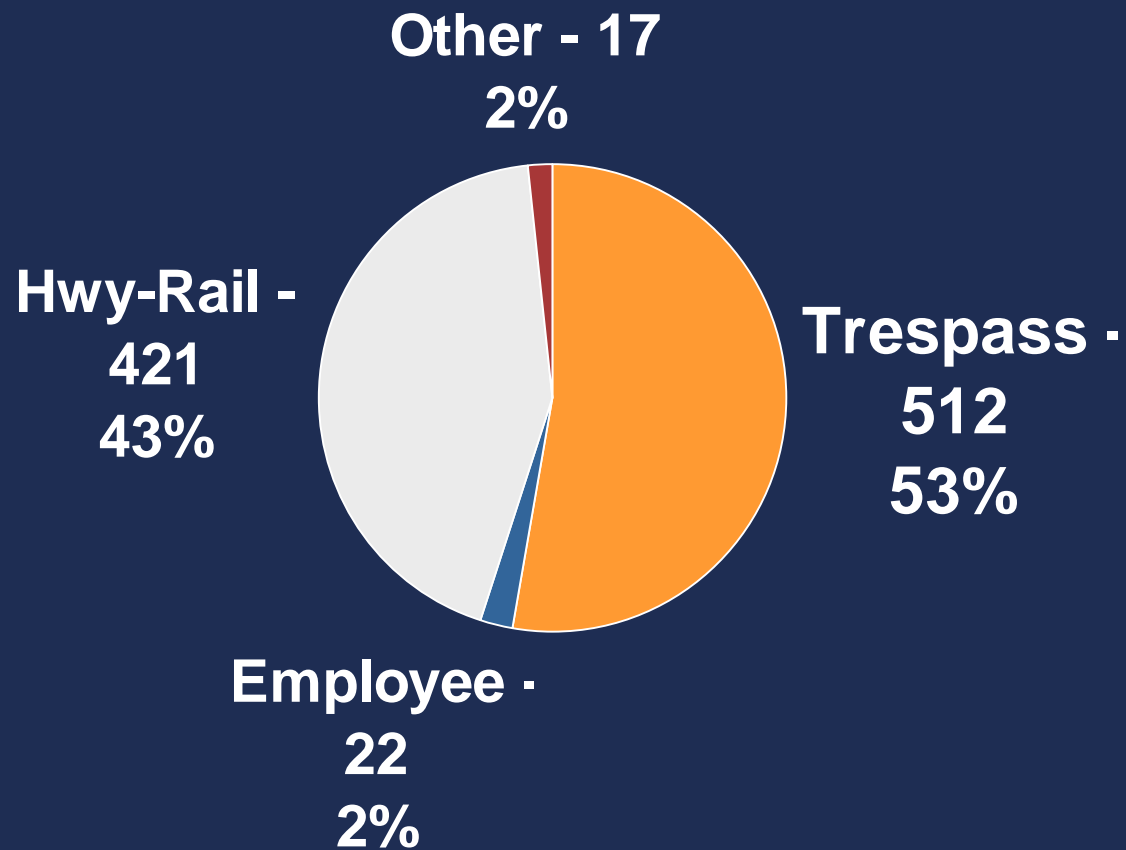
# FRA's Crossing Team

---

- 8 Headquarters Staff (2 more to be added)
- 16 Regional - *Each Crossing Manager develops programs to respond to the unique needs of the region.*
- 3 Regional Part time law enforcement liaisons
- Field and HQ participation

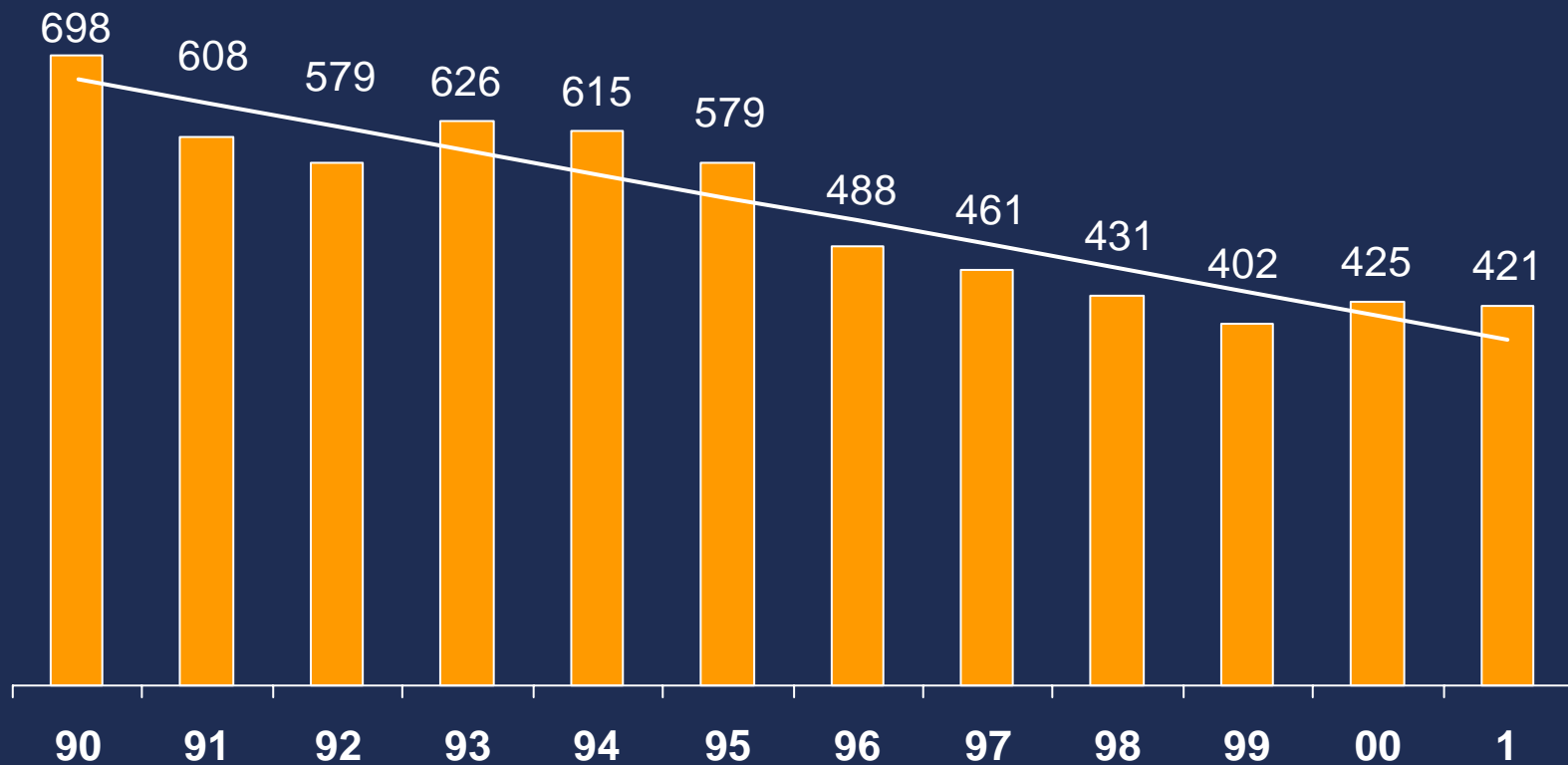
# Rail Fatalities in 2000

---



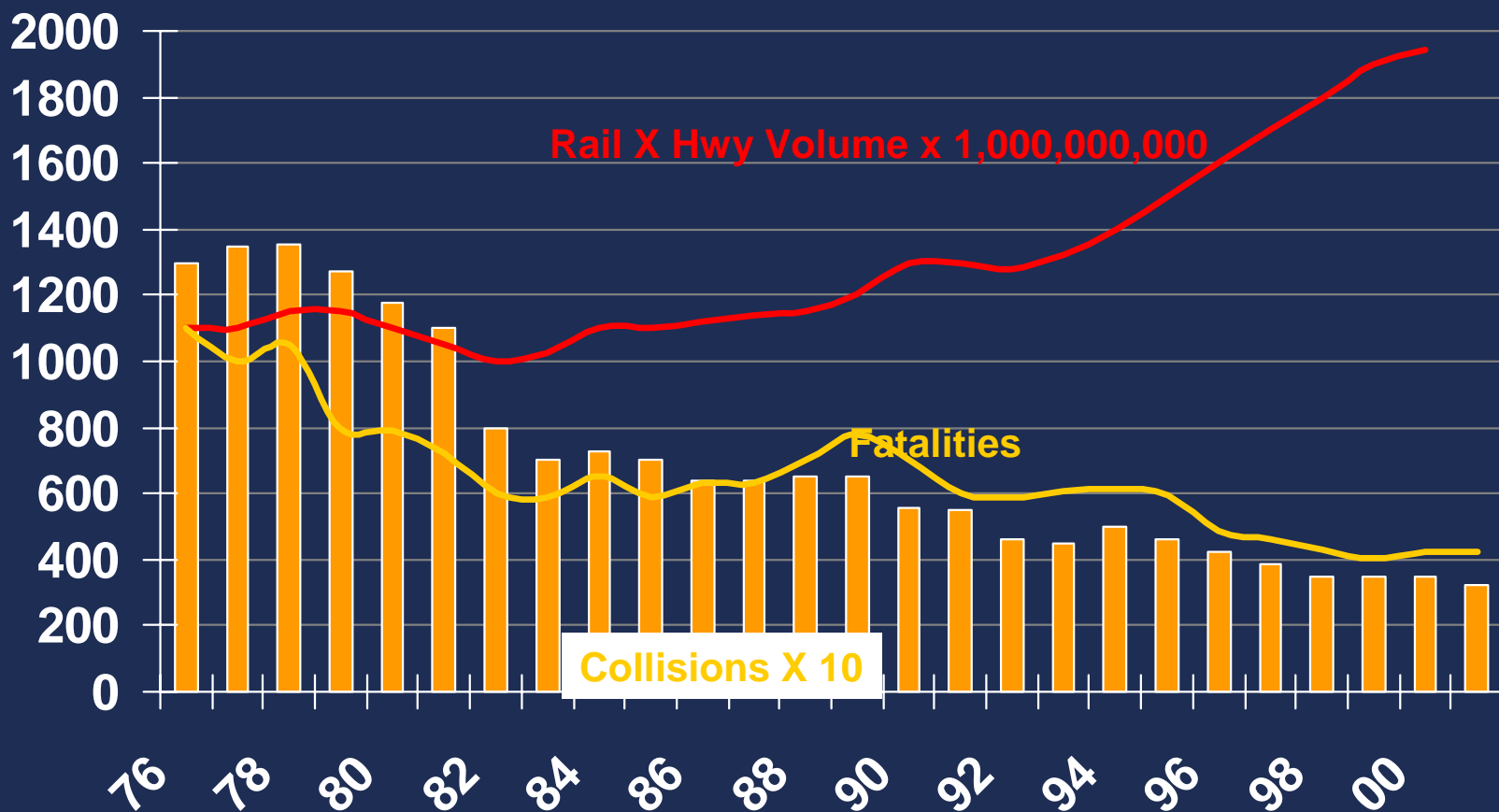
# Delivering Results

## Highway-Rail Fatalities

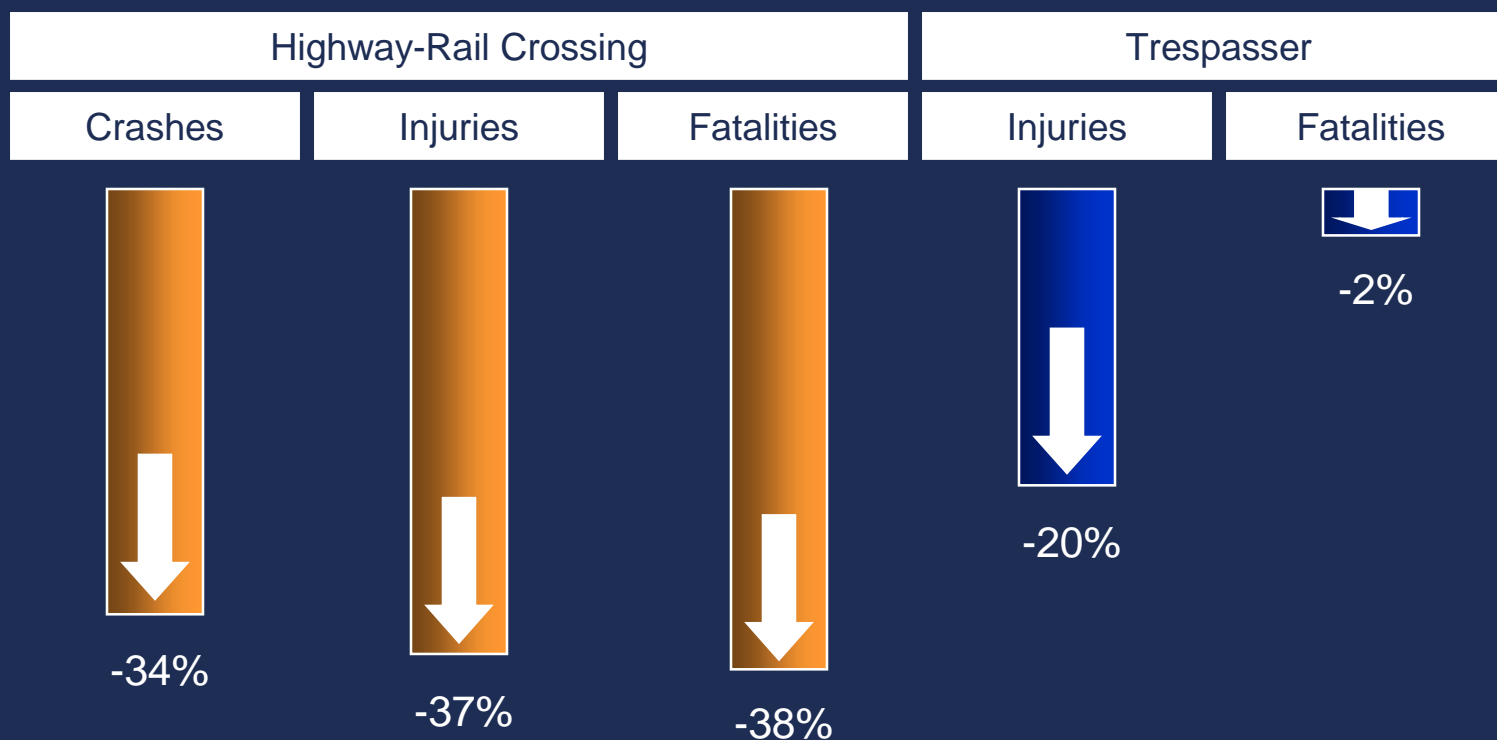


# Delivering Results

## Highway-Rail Crossings



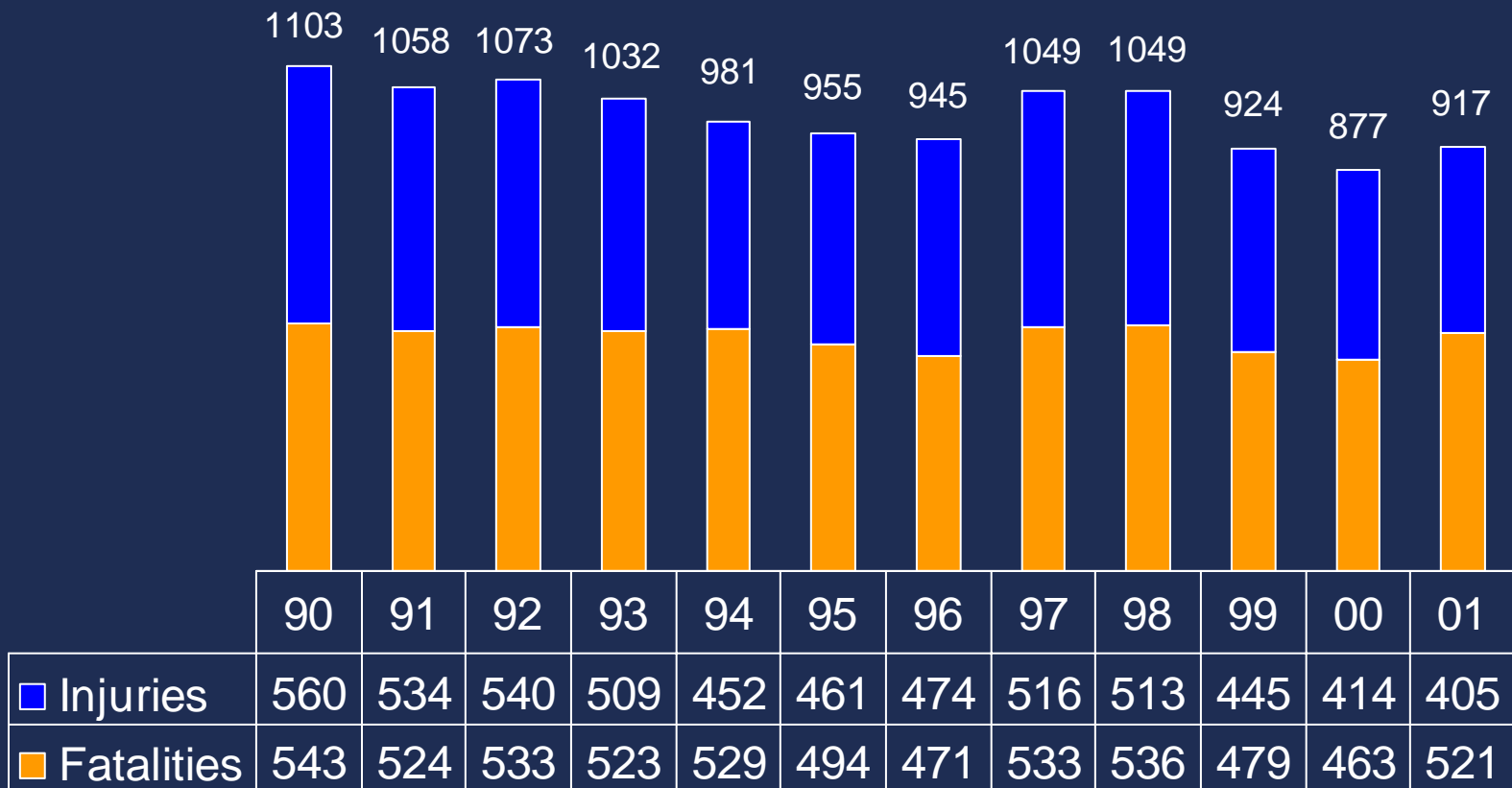
# Delivering Results Protecting the Public



(1993 – 2000)

# Delivering Results

## Trespasser Casualty Reduction



# Today's Presenters

---

- **Deborah Wojnicz – Crossing Manager, Region 8**
- **Tammy Wagner – Crossing Manager, Region 4**
- **Ofc. Jack Hanagriff, Houston Police Dept. Liaison Office, Region 5**



# Safety Partners

---

- Partners with Operation Lifesaver, Inc. (OLI)
- Crossing Managers work with state, local, and federal agencies.
  - Community concerns (train horns, blocked crossings, safety awareness)
  - Crossing improvements
  - Plan corridor programs
  - Advance public education and awareness
  - Focused efforts

# Metra Train/Vehicle Simulation



# EJ&E Mock Collision



# Railroad Partnerships

---

- Educational Outreach
- Safety committees
- Site distances and Vegetation control
- Crossing improvement programs
- Crossing closures
- Corridor projects
- Near miss reports
- Identify high profile crossings
- Advance grade crossing technology

# Education

---

- **Grade Crossing Safety Programs**
  - CDL Drivers
  - Professional Sport Teams
  - Targeted Audiences
  - Pubic Education and Enforcement Research Study (PEERS) project
  - Special projects (billboards, PSAs, public displays)
  - Pilot projects (WA, IL, MN, CA)







# Booths





# Professional Trucker Blitz Midwest Steel – Portage, IN

## Truckers get message: Trains are dangerous

■ Safety officials try to spread word about dangers on railroad crossings.

By CHARLES M. BARTHOLOMEW  
Post-Tribune correspondent

PORTAGE — In response to two near train-truck crashes earlier this year, safety officials Tuesday warned commercial truck drivers of the dangers of oncoming trains at the main gate of Midwest Steel.

Federal and railroad officials handed out hundreds of packets with safety reminders and copies of Indiana vehicle regulations at the main gate of Midwest Steel.

"We must have handed out over 300 of these, more than we expected," said Bob Meyer, assistant grade crossing manager for the Chicago office of the Federal Railroad Administration. The effort was a 10-hour campaign that began at 6 a.m.

FRA manager Tammy Wagner said the Midwest gate, with tracks for both the Norfolk Southern and the South Shore Railroads, was targeted for the Operation Lifesaver educational program. This came at the request of the Northern Indiana Commuter Transportation District and Midwest officials.

"We had two incidents in late January in which commuter trains had to airbrake to avoid trailers on the tracks," Wagner said.

Wagner also cited the June 1998 incident that killed three South Shore riders when a steel coil broke loose on impact when the train hit a trailer hauling coils which was stopped for a freight train on the adjacent rail line.

She said that nationwide there were 3,502 grade crossing accidents resulting in 425 deaths and 1,219 people injured last year.

"The most frequent cause of grade crossing accidents is driver error, people not paying



A Norfolk Southern train approaches the crossing Tuesday at the entrance to Midwest Steel.

attention," Wagner said, adding that signal malfunctions are not as big a factor as many people think.

"Today we're also asking drivers their names, how long they've been driving and whether they're aware of the length of their rigs," she said.

Wagner said the information would be put into a computer to assess the campaign's effectiveness by tracking drivers that are involved in future grade crossing incidents.

"The response has been very positive and in most cases very appreciative," Wagner said.

"(Midwest Steel Division) has been very, very open with this," said Norfolk Southern special agent Arpad Hayes, preparing to hand another driver the federal packet that was accompanied by a company safety bulletin.

According to Midwest officials, about 150 trains go through the crossings for both lines each day, often at the same time.

The Indiana Department of Transportation has slated the Midwest gate for an overpass access from U.S. 12 in the latest 5-year regional transportation plan, according to Kenneth Dallmeyer of NIRPC.

# Near Miss Reports

DATE	TIME	DIVISION	CITY/STATION	STATE	LEPOS	DOT #	CROSSING NAME	ACTION
06/10/98	1610	Twin	LaCrosse	WI	303		Sullivan Plant	Did not try to cross at xing
06/13/98	185	Twin	Sugar Grove	IL	42.91	06972	Gordon Lane	Crossed in front of train
07/02/98	945	Twin	Newport	MN			Newport xing	Crossed in front of train
07/09/98	1730	Twin	Brainerd	MN	118.3	07610	S 10th St/Hwy 371	Went around gates in front of train
07/17/98	2002	Chicago	Neponset	IL	124.5		1st xing west of	Crossed in front of train
07/18/98	745	Chicago	Vermont	IL	140.5	06381	PVT-Dirt xing	Speeding to cross in front of train
08/12/98	1923	Chicago	Elgin	IL			Hwy 79 by cement plant	Crossed in front of train
08/21/98	810	Chicago	Kewanee	IL	129	07972	Freemont Street	Crossed in front of train
09/04/98	1650	Twin	Devils Lake	MN	8	08676		Crossed in front of train
09/05/98	1523	Chicago	Kewanee	IL	131.3	07973	Park Street	Stopped on xing blocking both mains, cleared just in front of
09/15/98	930	Chicago	LaGrange	IL	13.73	07950	LaGrange Rd	Went around gates in front of train
09/24/98	1410	Twin	Howard Lake	MN	52.59	06786	Junction 7	Went around gates in front of train
09/27/98	148	Chicago	Smithshire	IL	202			Jumped in front of train, subject arrested
10/03/98	1410	Twin	Grasston	MN	93.88	06151	Hwy 70	Crossed in front of train
10/19/98	1130	Chicago	Ophiem	IL	23.68		Old Hwy 150	Slid sideways into ditch to keep from hitting train
10/29/98	740	Twin	Cochrane	WI	344	07993	Dump road	Went around gates in front of train

# Current Trespass Prevention Efforts

---

- Video Monitoring
- Demographic Study
- Law Enforcement Outreach

# Trespass Prevention Chicago, IL

---



# Public Education and Enforcement Research Study (PEERS)

---

- Monitor motorist and pedestrian behaviors at grade crossings.
- BNSF, UP, and Metra in Illinois
- Determine frequency of violations
  - Pre-implementation study
  - Education and enforcement efforts
  - Post implementation of violations

# Engineering

---

- **National Crossing Inventory**
- **Crossing Closures**
- **Corridor Projects**
- **New Technology (wayside horns, median barriers, grade crossing video surveillance)**
- **Emergency Notification System**

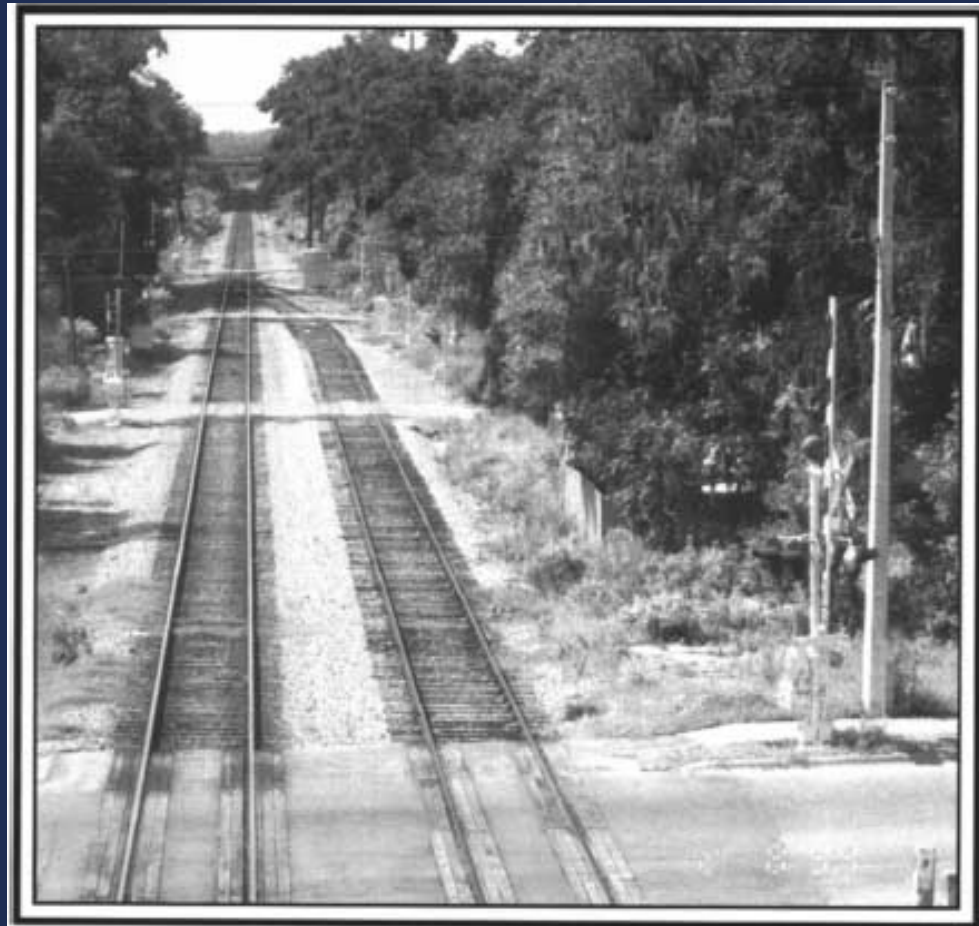
# Fargo, ND and Moorhead, MN Quiet Zone Project

---

- Partnership with BNSF
- Diagnostic review of 20 grade crossings
- Determine Supplemental Safety Measures and crossing closures
- Location of grade crossings included in video monitoring for pilot study
- Application process and implementation

# Crossing Closure & Consolidation

---





# Crossing Closure

## Homan Avenue - Chicago, IL

---



# Humped Crossings

## Intercession City, FL

---



# Wayside Horn Project Mundelein, IL

---



# 4 Quadrant Gates

---

- Use where medians are not practical
- Proven effectiveness (NC) - 82% reduction
- Growing number of installations
- Included in MUTCD

# 4 Quadrant Gates

---





# Quiet Zone with Median Barriers Cortland, IL





# Enforcement

---

- Liaison Positions
- Roll Call Training
- Targeted Videos
- Crossing Investigation Courses
- Automated Enforcement

# Madison County Solution

---





# Downers Grove, IL

## Photo Enforcement

---



# Downers Grove, IL

---



# Naperville, IL

## Video Enforcement Project

---



# Naperville, IL

---



# Video Monitoring Pittsford, New York



# Law Enforcement Liaison

---

- **Illinois Roll Call training offered to 11,000 law enforcement officers**
- **Distribution of Roll Call and It's Your Call videos to IL Regional Training Academy, Indiana State Police Posts, Chiefs and Sheriffs Association in MN, Wisconsin State Training Board library**





# Where are we headed?

---

- **FRA Train Horn Rule**
- **Quiet zone imitative**
- **Data analysis to determine high risk areas**
- **Advance state safety programs**
- **Reduce highway-rail grade crossing and trespass incidents nationwide**



# Complaints and Incidents

---

- Provide data and technical support
- Review accident and complaint reports
- Provide assistance or coordinate highway-rail crossing accident investigations and complaints

# Data

---

- **Provide data to partners in crossing safety and trespass prevention**
- **Access computer databases on railroad accident reports and crossing inventory**
- **Encourage accurate DOT crossing inventory**
- **PCAPS**
- **Provide information to OL volunteers**
- **Media contact**

## 2 National Notes

---

- **Technical Working Group Report – should be on the web within weeks**
- **Canadian Rail Accident Protocol**
  - Looking for ways to implement
  - Law enforcement liaisons

# Thank You For Your Help!

---

## Questions?

# Questions

---

- ◆ **Ron Ries, Staff Director,  
(202) 493-6285**
- ◆ **Tammy Wagner, Region 4 Crossing Mgr.  
(312) 353-6203**
- ◆ **Deborah Wojnicz, Region 8 Crossing Mgr.  
(253) 941-6178**
- ◆ **Ofc. Jack Hanagriff, Houston Police Dept.  
Liaison Office, Region 5**