

## **BURLINGTON NORTHERN SANTA FE RAILWAY COMPANY (BNSF)**

(Wholly owned subsidiary of Burlington Northern Santa Fe Corp.)

**Executive Office:** 2650 Lou Menk Drive  
Fort Worth, TX 76161  
(817) 878-2000

### **Executive Officers:**

< Chairman:	Robert D. Krebs
< President & CEO:	Matthew K. Rose
< Exec. VP, COO:	Carl R. Ice

### **States and Canada Served:**



### **Railroad Profile:**

No. of Employees (Avg):	42,659
Miles of Road Operated:	33,264 covering 29 States and Canada
Traffic (Key Commodities):	Coal, Grain, Chemicals, Food, Metallic Ores

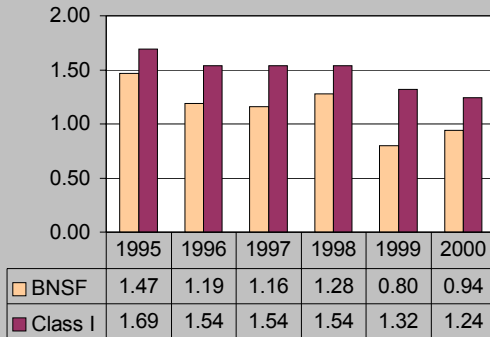
### **Financial and Operating Information (\$ In Millions) - 1999:**

Total Assets (\$)	23,784.3	Employee Hours (000)	111,361
Total Liabilities (\$)	14,325.0	Train Miles	146,097,909
Net Shareholders' Eq (\$)	9,459.3	Switching Hours (Freight)	2,585,235
Operating Revenues (\$)	9,094.5	Rev Ton-Miles (b)	487.8
Operating Expenses (\$)	6,891.5	Freight Car-Miles (000)	8,989,941
Current Ratio	0.5	Locomotive Miles	466,583,634
Net Rev From Operations	2,203.0	Locomotives	5,134
Debt/Equity Ratio	44.13%	Freight Cars In Service	98,559
MOW/Rev \$	14.24%		

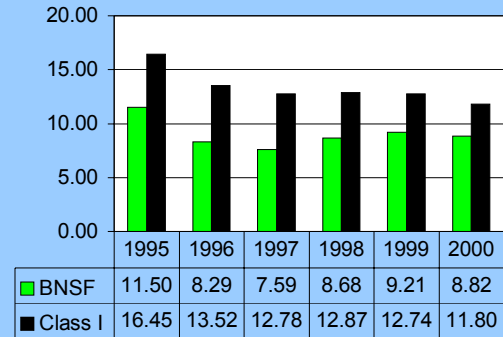
# Burlington Northern Santa Fe Railway Company

## Safety Performance

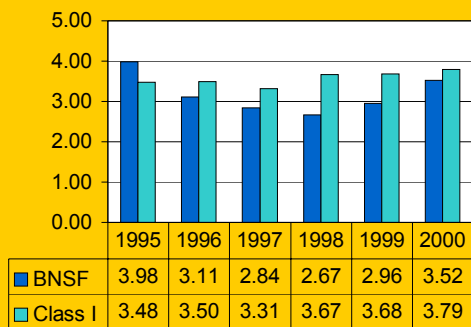
**Rail-Related Fatalities 1995 - 2000\***  
Per Million Train-Miles



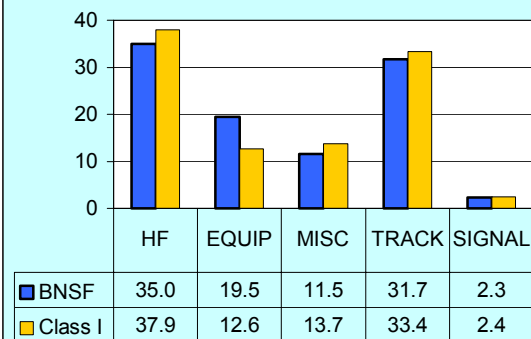
**Rail-Related Injuries 1995 - 2000\***  
Per Million Train-Miles



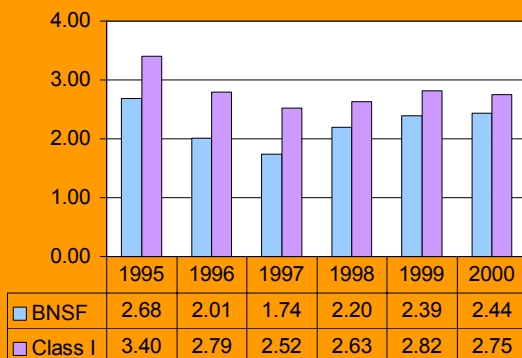
**Train Accidents 1995 - 2000\***  
Per Million Train-Miles  
(Excludes Xing)



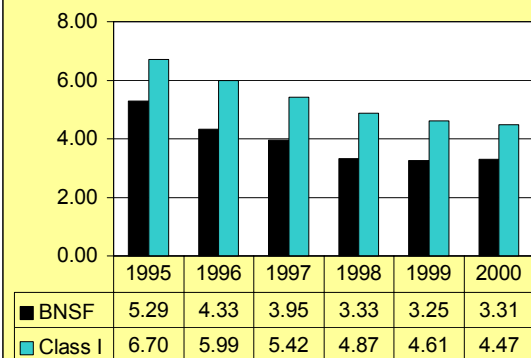
**Accidents By Cause - 2000\***  
% of Accidents



**Employee Casualties 1995 - 2000\***  
Per 200,000 Employee-Hours



**Grade Crossing Collisions 1995 - 2000\***  
Per Million Train-Miles



\*Year 2000 data is preliminary

## CSX TRANSPORTATION, INC. (CSX)

**Executive Office:** 500 Water Street  
Jacksonville, FL 32202  
(904) 359-3100

### Executive Officers:

< Chairman, Pres. & CEO-CSX Corp.:	John W. Snow
< President CSXT:	Michael J. Ward

### States and Canada Served:



### Railroad Profile:

No. of Employees (Avg):	32,023
Miles of Road Operated:	23,357 covering 23 States; D.C. and Canada
Traffic (Key Commodities):	Coal, Motor Vehicles, Chemicals, Non-Metallic Minerals, Crushed Stone

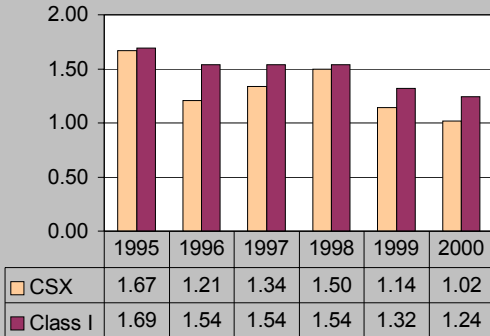
### Financial and Operating Information (\$ In Millions) - 1999:

Total Assets (\$)	12,917.2	Employee Hours (000)	87,018
Total Liabilities (\$)	7,292.5	Train Miles	83,435,844
Net Shareholders' Eq (\$)	5,624.8	Switching Hours (Freight)	2,762,568
Operating Revenues (\$)	5,623.0	Rev Ton-Miles (b)	189.2
Operating Expenses (\$)	5,190.3	Freight Car-Miles (000)	5,049,346
Current Ratio	0.4	Locomotive Miles	198,703,154
Net Rev From Operations	432.8	Locomotives	3,713
Debt/Equity Ratio	19.40%	Freight Cars In Service	127,934
MOW/Rev \$	15.94%		

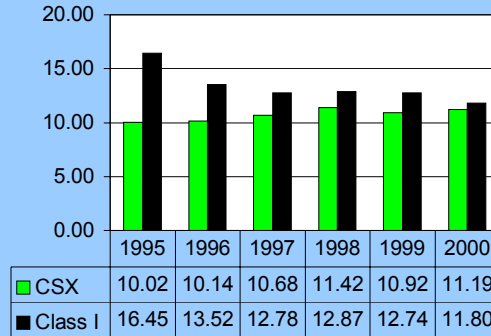
# CSX Transportation, Inc.

## Safety Performance

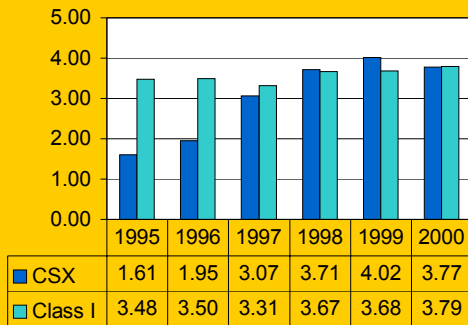
**Rail-Related Fatalities 1995 - 2000\***  
Per Million Train-Miles



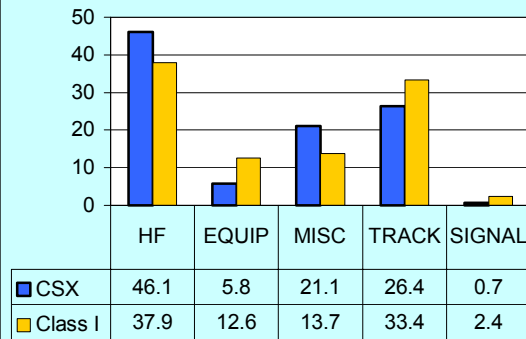
**Rail-Related Injuries 1995 - 2000\***  
Per Million Train-Miles



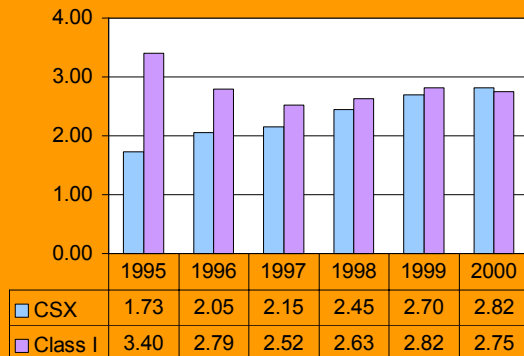
**Train Accidents 1995 - 2000\***  
Per Million Train-Miles  
(Excludes Xing)



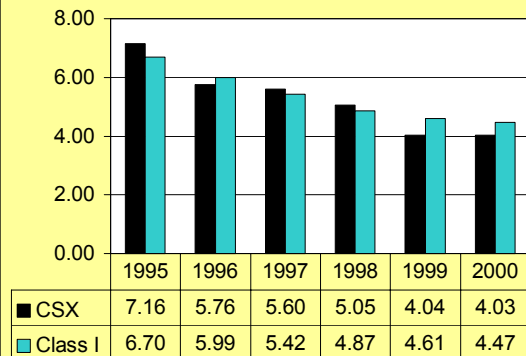
**Accidents By Cause - 2000\***  
% of Accidents



**Employee Casualties 1995 - 2000\***  
Per 200,000 Employee-Hours



**Grade Crossing Collisions 1995 - 2000\***  
Per Million Train-Miles



\*Year 2000 data is preliminary

**ILLINOIS CENTRAL RAILROAD COMPANY (IC)**  
(Merged with Canadian National)

**Executive Office:** NBC Tower  
455 N. Cityfront Plaza Drive  
Chicago, IL 60611  
(312) 755-7500

**Executive Officers:**

< President & CEO, Canadian National: Paul M. Tellier  
< Exec. VP & COO, Canadian National: E. Hunter Harrison

**States Served:**



**Railroad Profile:**

No. of Employees (Avg): 2,796  
Miles of Road Operated: 2,591 covering 6 States  
Traffic (Key Commodities): Coal, Chemicals, Grain, Grain Mill Products, Paper

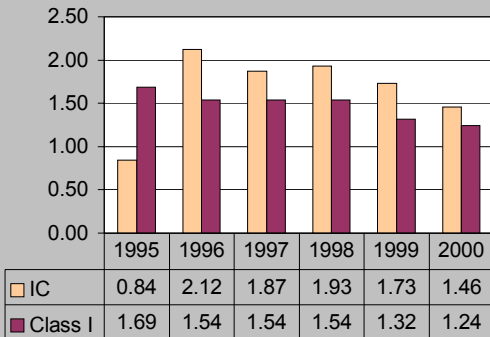
**Financial and Operating Information (\$ In Millions) - 1999:**

Total Assets (\$)	1,954.8	Employee Hours (000)	8,171
Total Liabilities (\$)	1,879.9	Train Miles	8,031,251
Net Shareholders' Eq (\$)	74.9	Switching Hours (Freight)	250,869
Operating Revenues (\$)	670.6	Rev Ton-Miles (b)	24.7
Operating Expenses (\$)	529.3	Freight Car-Miles (000)	558,256
Current Ratio	0.8	Locomotive Miles	19,517,355
Net Rev From Operations	141.2	Locomotives	323
Debt/Equity Ratio	1455.54%	Freight Cars In Service	15,109
MOW/Rev \$	8.02%		

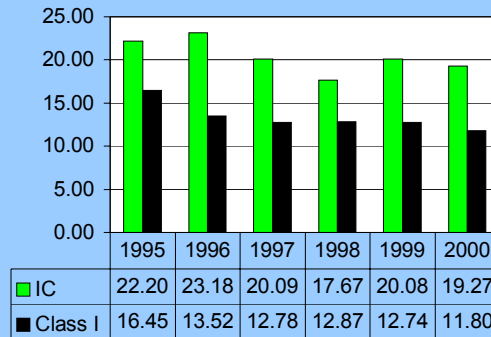
# Illinois Central Railroad Company

## Safety Performance

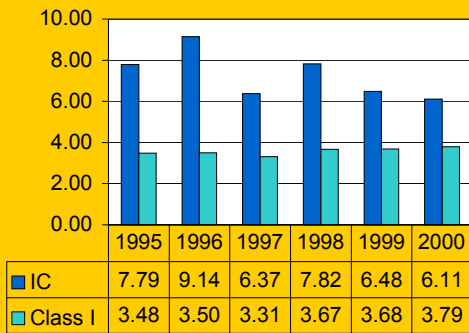
**Rail-Related Fatalities 1995 - 2000\***  
Per Million Train-Miles



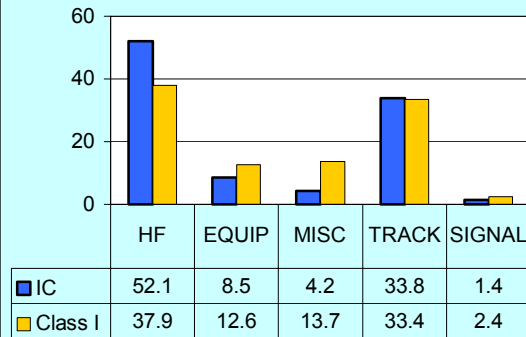
**Rail-Related Injuries 1995 - 2000\***  
Per Million Train-Miles



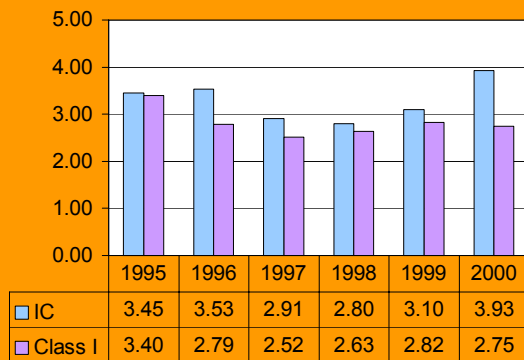
**Train Accidents 1995 - 2000\***  
Per Million Train-Miles  
(Excludes Xing)



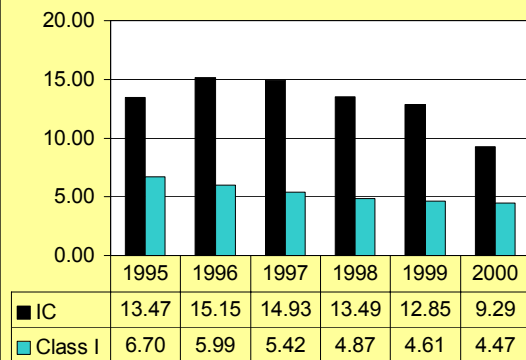
**Accidents By Cause - 2000\***  
% of Accidents



**Employee Casualties 1995 - 2000\***  
Per 200,000 Employee-Hours



**Grade Crossing Collisions 1995 - 2000\***  
Per Million Train-Miles



\*Year 2000 data is preliminary

## KANSAS CITY SOUTHERN RAILWAY COMPANY (KCS)

**Executive Office:** 114 W. 11th Street  
Kansas City, MO 64105  
(816) 983-1303

### Executive Officers:

< President & Chief Executive Officer: Michael R. Haverty  
< Exec. VP & COO: Gerald K. Davies  
< Senior Vice President & Chief Financial Officer: R. H. Berry

### States Served:



### Railroad Profile:

No. of Employees (Avg): 2,640  
Miles of Road Operated: 2,756 covering 9 States  
Traffic (Key Commodities): Paper, Chemicals, Primary Forest, Grain, Fuels

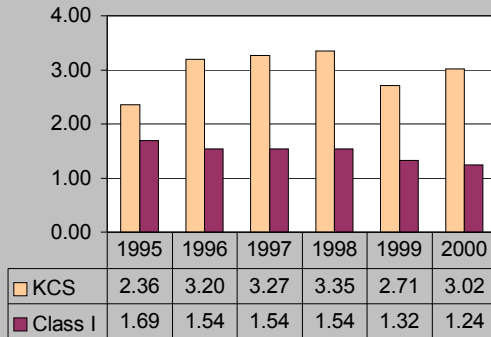
### Financial and Operating Information (\$ In Millions) - 1999:

Total Assets (\$)	1,412.3	Employee Hours (000)	6,784
Total Liabilities (\$)	1006.6	Train Miles	7,306,370
Net Shareholders' Eq (\$)	405.6	Switching Hours (Freight)	196,069
Operating Revenues (\$)	544.8	Rev Ton-Miles (b)	22.2
Operating Expenses (\$)	473.8	Freight Car-Miles (000)	492,070
Current Ratio	0.8	Locomotive Miles	20,886,395
Net Rev From Operations	71.0	Locomotives	495
Debt/Equity Ratio	111.64%	Freight Cars In Service	15,349
MOW/Rev \$	16.59%		

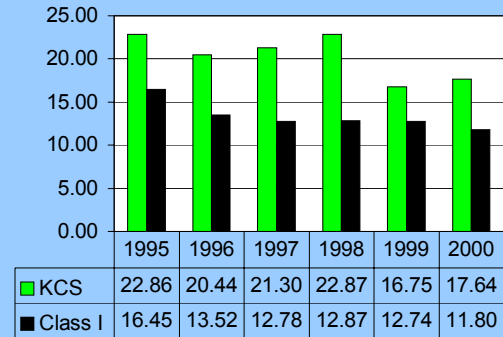
# Kansas City Southern Railway Company

## Safety Performance

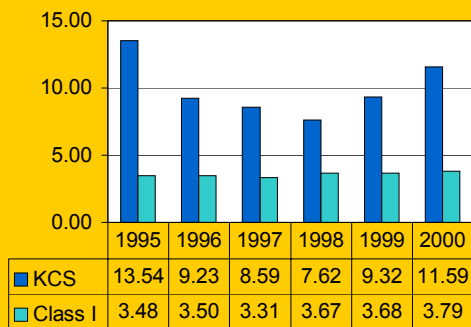
**Rail-Related Fatalities 1995 - 2000\***  
Per Million Train-Miles



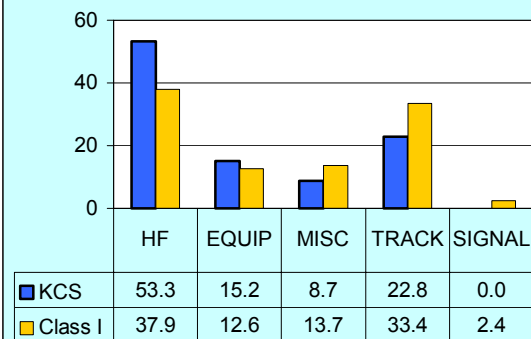
**Rail-Related Injuries 1995 - 2000\***  
Per Million Train-Miles



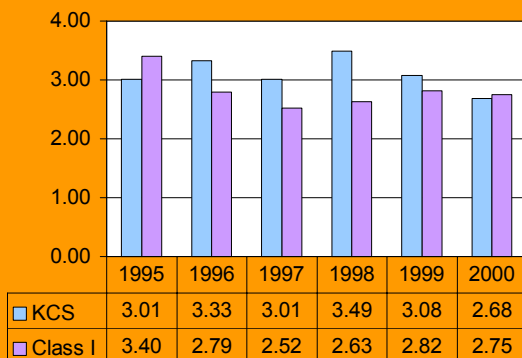
**Train Accidents 1995 - 2000\***  
Per Million Train-Miles  
(Excludes Xing)



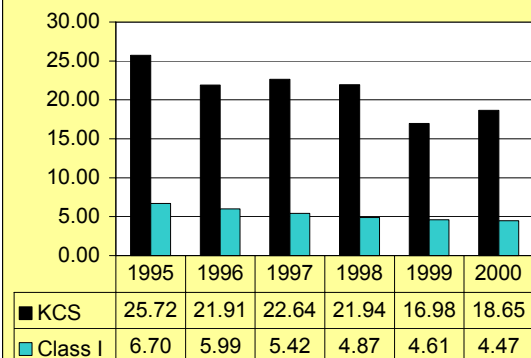
**Accidents By Cause - 2000\***  
% of Accidents



**Employee Casualties 1995 - 2000\***  
Per 200,000 Employee-Hours



**Grade Crossing Collisions 1995 - 2000\***  
Per Million Train-Miles



\*Year 2000 data is preliminary



## NATIONAL RAILROAD PASSENGER CORPORATION (ATK)

**Executive Office:** 60 Massachusetts Avenue, N.E.  
Washington, D.C. 20002  
(202) 906-3000

### Executive Officers:

< President & CEO:	George D. Warrington
< Chief Financial Officer:	Arlene Friner
< President, NEC Operations:	E. S. Bagley, Jr.
< VP - Service Standards:	Ann Hoey
< President, Intercity Operations:	Ed Walker
< President, West Operations:	Gilbert O. Mallery

### States Served:



### Railroad Profile:

No. of Employees (Avg):	24,979
Miles of Road Operated:	23,000 covering 45 States and D.C.
Ridership:	21.5 mill intercity riders & 58.3 mill commuters; served 510 stations.

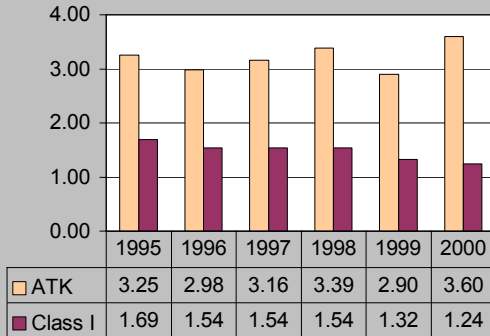
### Financial and Operating Information (\$ In Millions) - 1999:

Total Assets (\$)	8,095.0	Employee Hours	56,306,916
Total Liabilities (\$)	3,487.3	Train Miles	33,806,000
Net Shareholders' Eq (\$)	4,607.7	Passenger Miles (m)	5,330
Current Ratio	1.49	Seat Miles (m)	12,064
Total Revenues (\$)	2,042.3	Load Factor	4.2%
Total Expenses (\$)	2,744.5	(Pass Miles/Seat Miles)	
Operating Income (Or Loss)\$	(702.2)	Active Fleet (# of Cars)	1,992
Capital Structure (Debt %)	22.1		

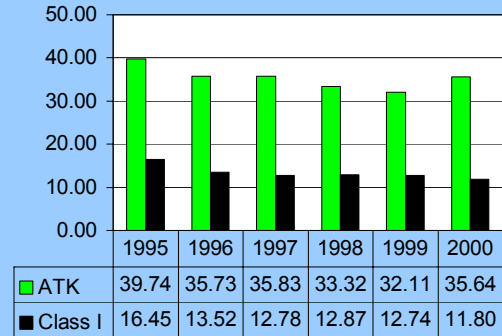
# Amtrak

## Safety Performance

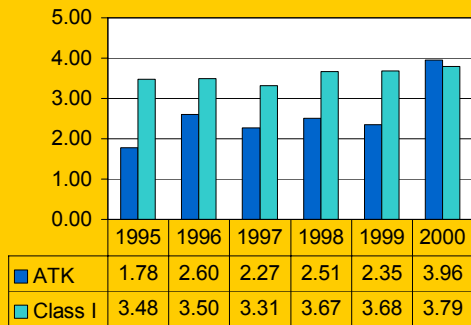
**Rail-Related Fatalities 1995 - 2000\***  
Per Million Train-Miles



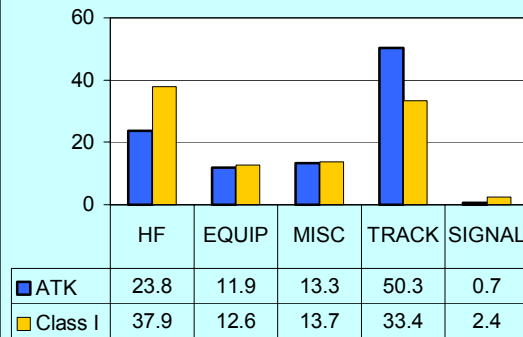
**Rail-Related Injuries 1995 - 2000\***  
Per Million Train-Miles



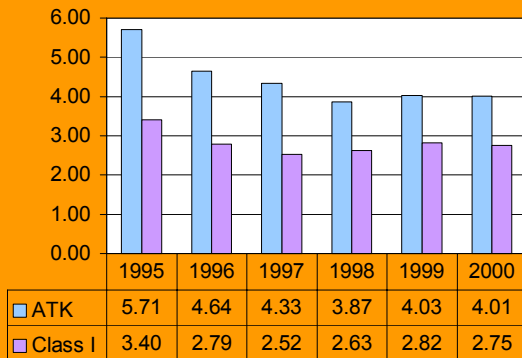
**Train Accidents 1995 - 2000\***  
Per Million Train-Miles  
(Excludes Xing)



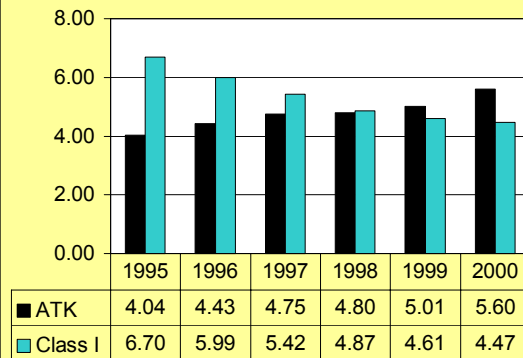
**Accidents By Cause - 2000\***  
% of Accidents



**Employee Casualties 1995 -2000\***  
Per 200,000 Employee-Hours



**Grade Crossing Collisions 1995 - 2000\***  
Per Million Train-Miles



\*Year 2000 data is preliminary

## NORFOLK SOUTHERN CORPORATION (NS)

**Executive Office:** Three Commercial Place  
Norfolk, VA 23510-9227  
(757) 629-2600

### Executive Officers:

< Chairman, President & CEO:	David R. Goode
< Vice Chairman & COO:	Stephen C. Tobias
< V. P. - Safety & Environmental:	Charles Wehrmeister

### States and Canada Served:



### Railroad Profile:

No. of Employees (Avg):	30,897
Miles of Road Operated:	21,788 covering 23 States, D.C. and Canada
Traffic (Key Commodities):	Coal, Motor Vehicles, Metals, Chemicals, Grain

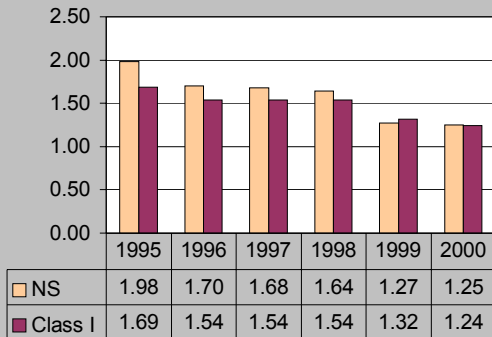
### Financial and Operating Information (\$ In Millions) - 1999:

Total Assets (\$)	12,812.2	Employee Hours (000)	73,581
Total Liabilities (\$)	7,535.6	Train Miles	61,503,285
Net Shareholders' Eq (\$)	5,276.6	Switching Hours (Freight)	3,257,140
Operating Revenues (\$)	5,194.6	Rev Ton-Miles (b)	165.5
Operating Expenses (\$)	4,695.9	Freight Car-Miles (000)	4,028,656
Current Ratio	0.6	Locomotive Miles	182,803,088
Net Rev From Operations	498.6	Locomotives	3,399
Debt/Equity Ratio	18.35%	Freight Cars In Service	117,042
MOW/Rev \$	18.26%		

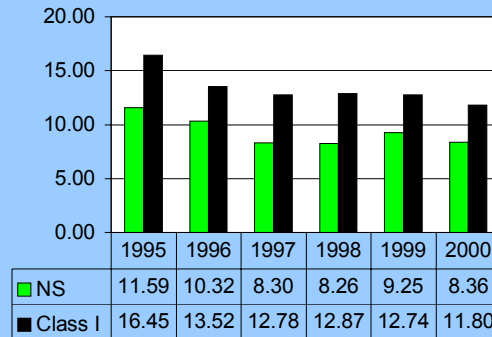
# Norfolk Southern Corporation

## Safety Performance

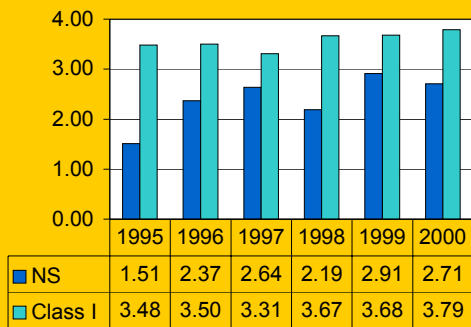
**Rail-Related Fatalities 1995 - 2000\***  
Per Million Train-Miles



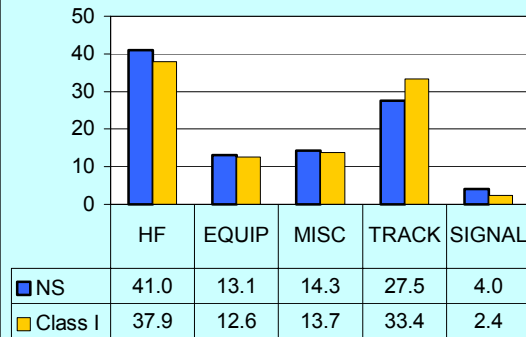
**Rail-Related Injuries 1995 - 2000\***  
Per Million Train-Miles



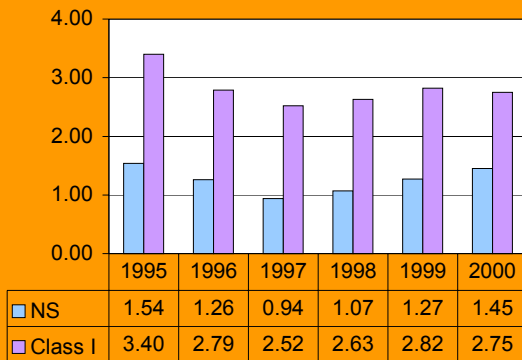
**Train Accidents 1995 - 2000\***  
Per Million Train-Miles  
(Excludes Xing)



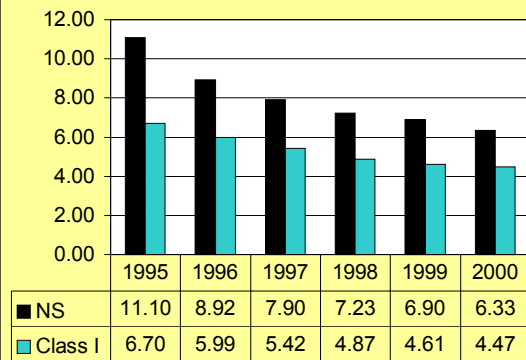
**Accidents By Cause - 2000\***  
% of Accidents



**Employee Casualties 1995 - 2000\***  
Per 200,000 Employee-Hours



**Grade Crossing Collisions 1995 - 2000\***  
Per Million Train-Miles



\*Year 2000 data is preliminary

## UNION PACIFIC RAILROAD COMPANY (UP)

(A subsidiary of Union Pacific Corp.)

**Executive Office:** Union Pacific Building  
1416 Dodge Street  
Omaha, NE 68179  
(402) 271-5000

### Executive Officers:

< Chairman, President and CEO, UP Corp: Richard K. Davidson  
< President and COO, UPRR: Ike Evans

### States Served:



### Railroad Profile:

No. of Employees (Avg): 53,306  
Miles of Road Operated: 33,341 covering 24 States  
Traffic (Key Commodities): Coal, Chemicals, Motor Vehicles, Grain, Crushed Stone

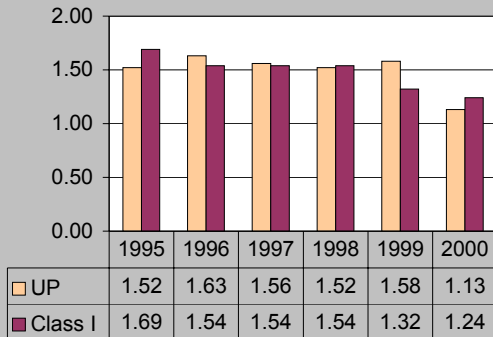
### Financial and Operating Information (\$ In Millions) - 1999:

Total Assets (\$)	29,356.2	Employee Hours (000)	136,118
Total Liabilities (\$)	20,083.9	Train Miles	155,965,639
Net Shareholders' Eq (\$)	9,272.3	Switching Hours (Freight)	4,456,030
Operating Revenues (\$)	9,987.0	Rev Ton-Miles (b)	473.1
Operating Expenses (\$)	8,222.3	Freight Car-Miles (000)	12,845,514
Current Ratio	0.4	Locomotive Miles	537,930,492
Net Rev From Operations	1,764.6	Locomotives	6,974
Debt/Equity Ratio	86.98%	Freight Cars In Service	114,736
MOW/Rev \$	14.34%		

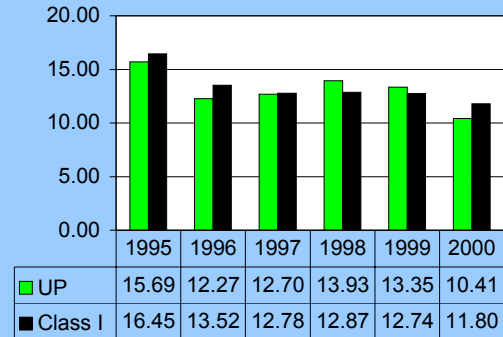
# Union Pacific Railroad Company

## Safety Performance

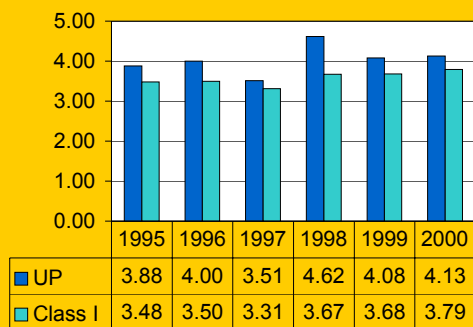
**Rail-Related Fatalities 1995 - 2000\***  
Per Million Train-Miles



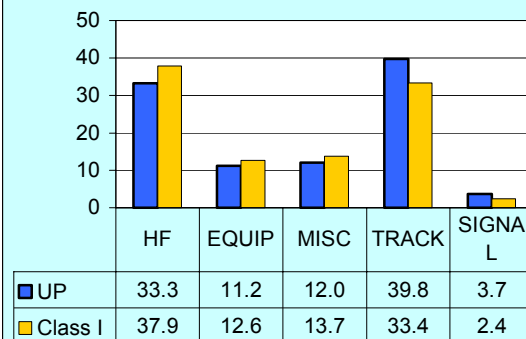
**Rail-Related Injuries 1995 - 2000\***  
Per Million Train-Miles



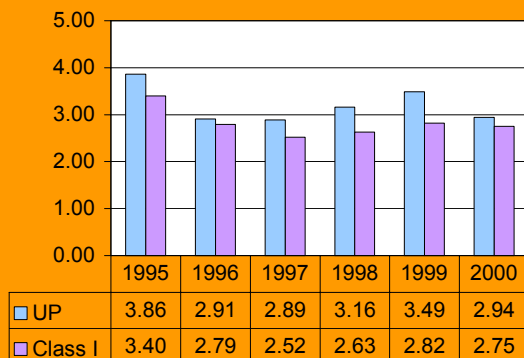
**Train Accidents 1995 - 2000\***  
Per Million Train-Miles  
(Excludes Xing)



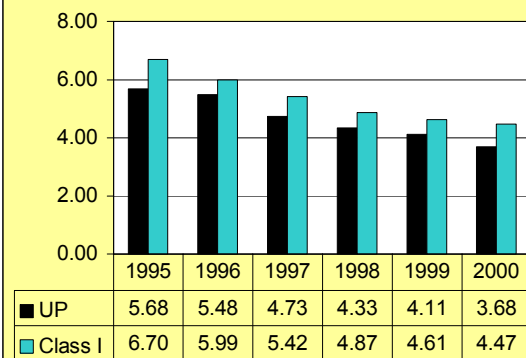
**Accidents By Cause - 2000\***  
% of Accidents



**Employee Casualties 1995 - 2000\***  
Per 200,000 Employee-Hours



**Grade Crossing Collisions 1995 - 2000\***  
Per Million Train-Miles



\*Year 2000 data is preliminary.